

An aerial photograph of a large, irregularly shaped lake surrounded by a mix of green fields, dense forests, and some residential or commercial buildings. The lake is the central focus, with various inlets and peninsulas. The surrounding land is a patchwork of different colors, from vibrant green to golden-brown, indicating different types of vegetation or agricultural land. In the bottom right corner, there is a faint watermark logo for 'fineart america'.

Pine Lake 2026

Amanda Schmitz - AIS Coordinator

Amanda Schmitz - Aquatic Invasive Species Coordinator

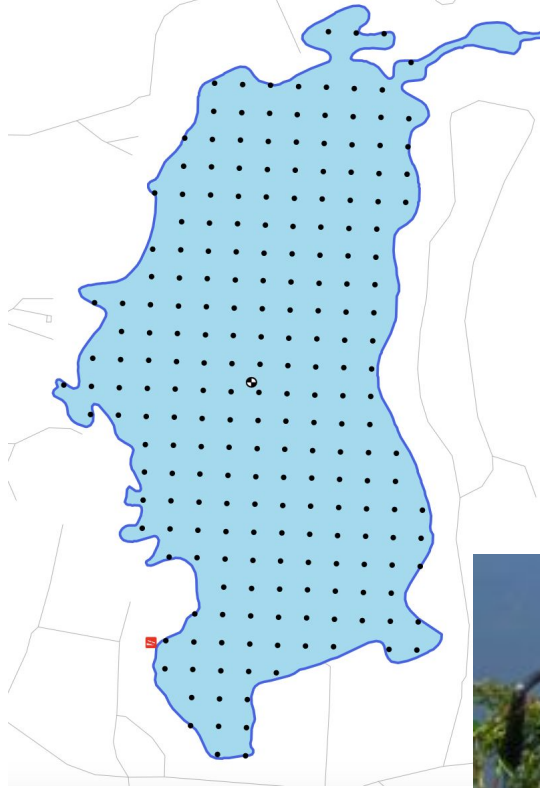
- Washington & Waukesha Counties
- Lake Monitoring & Protection Network grant funded
- Localized AIS monitoring, education, and assistance



PI Surveys

Point Intercept surveys are used to collect quantitative plant species data on waterbodies.

Each grid point is sampled for depth, sediment type, and aquatic plant presence.



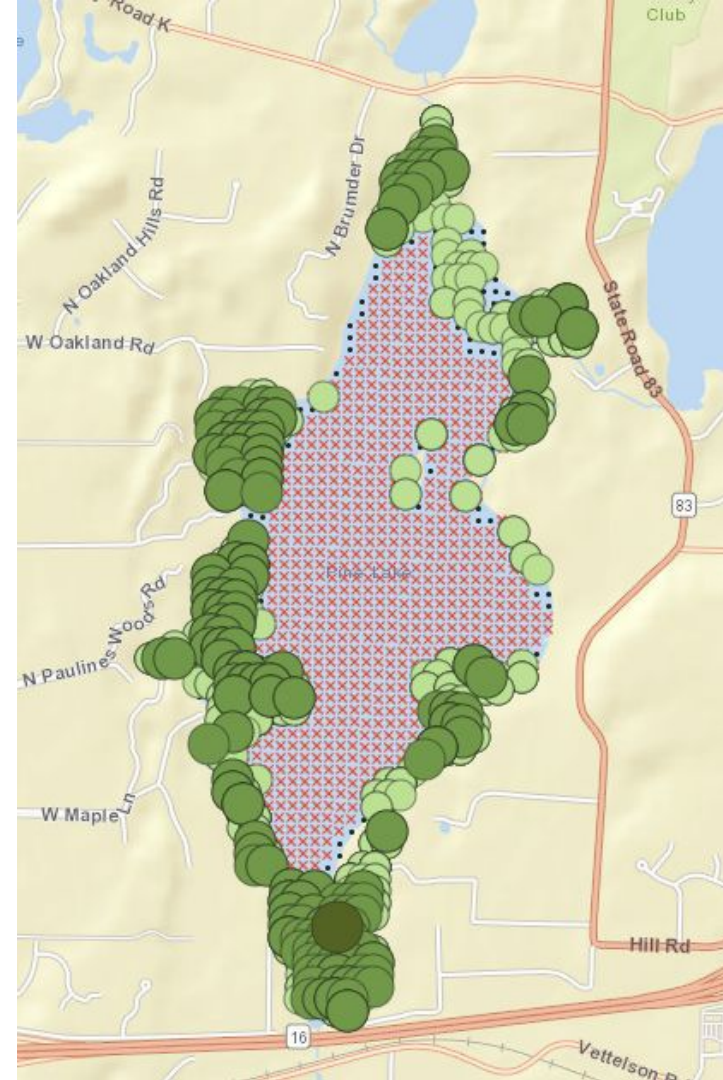
Species on Pine Lake

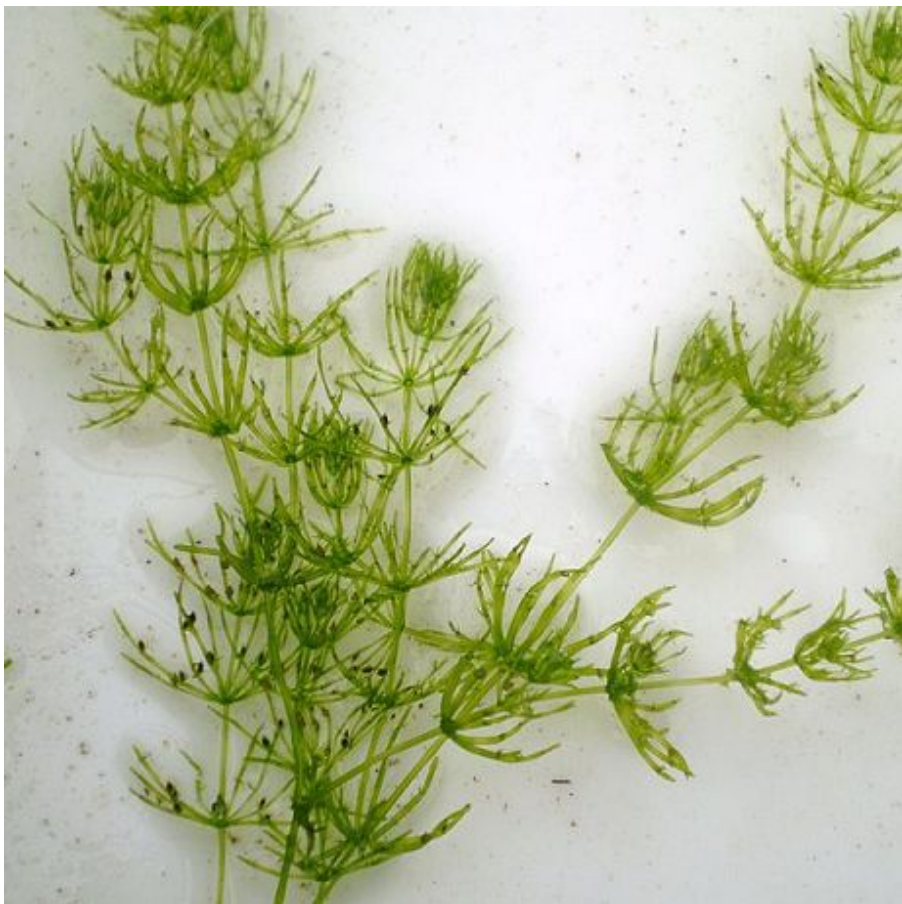
Last full PI data from 2013

- 22 species present (2 invasives)
- Starry Stonewort present now, numbers may be different

Most common plants:

- Chara sp.
- Coontail
- Eurasian Water Milfoil
- Fries Pondweed
- Water Stargrass
- Spiny Naiad





Chara sp.



Water Stargrass





Fries Pondweed



Spiny Naiad

© Scott Freeman



Coontail

AIS Present on Pine Lake



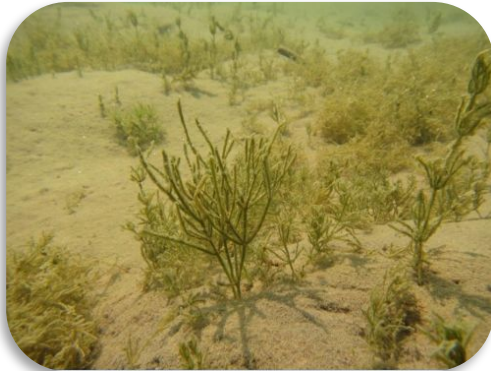
Zebra Mussel
(2005)



Eurasian/Hybrid Water
Milfoil (1978/2012)



Curly Leaf Pondweed
(2013)



Starry Stonewort
(2025)

Hybridization

Pine Lake has a genetically unique hybrid milfoil strain (H_MYR_16544).

No current herbicide response information available

Milfoil mapper tool - Montana State University



+

-

State: WI**County:** Waukesha**Lake (Waterbody ID):** Pewaukee (772000)**Sub Basin:** NA**Year(s) Collected:** 2020**Strain IDs (Herbicide Response):**→ E_MISGP_1863 (2,4-D: **Susceptible**; Fluridone: **Susceptible**; Procellacor: Unknown),

→ H_MYR_7675 (2,4-D: Unknown; Fluridone: Unknown; Procellacor: Unknown)

✕

Nagawicka
LakeNaga-Waukee
County
ParkPewaukee
Lake

CTH SS

CTH G

GE Health
Headquar

287

287

East-West Freeway

194

East-West Freeway

290

290

291

291

East-West Freeway 293

Coontail vs Eurasian Water Milfoil



Muskgrass

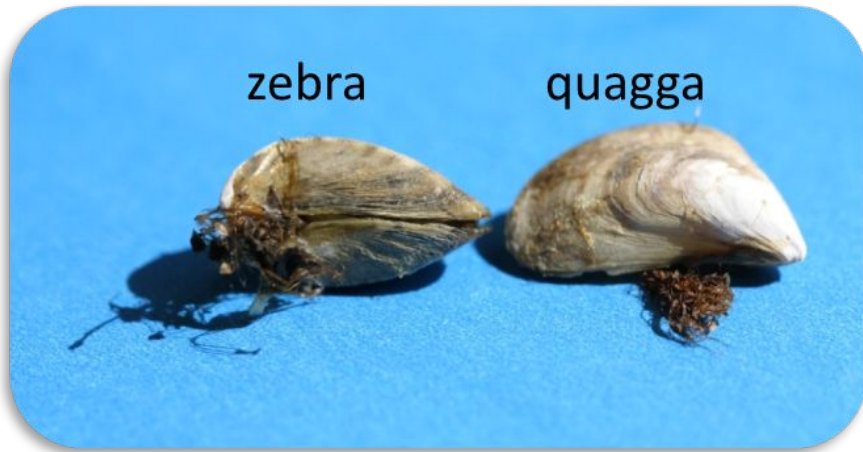
vs.

Starry Stonewort

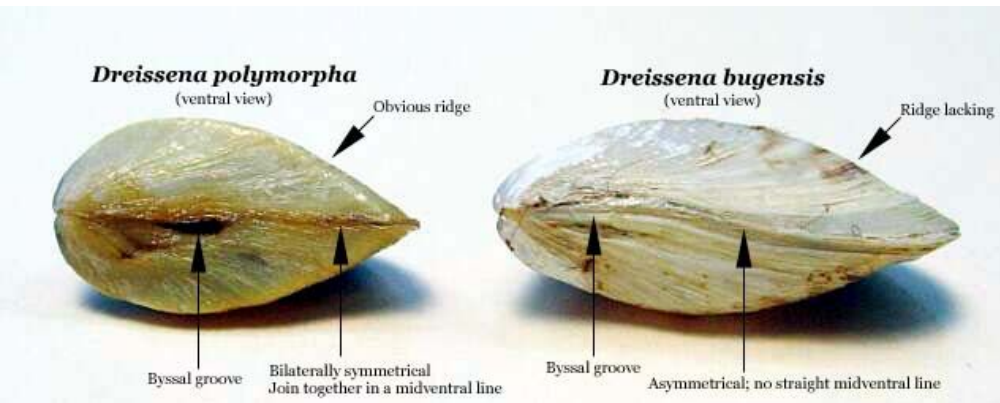


Be on the lookout...





Quagga Mussel





Aquarium Species

Chinese Mystery Snail



Hydrilla- EXOTIC

Hydrilla verticillata



Tuber in sediments



Leaves in 3s or 5s whorled around stem with curling tips, very toothed or serrated on edges

Brazilian elodea- EXOTIC

Egeria densa



Leaves in 4s or 8s whorled around stem with broader leaves, slightly toothed at edges

Waterweed- NATIVE

Elodea nuttallii



Leaves in 3s whorled around stem with narrow leaves, no teeth on margins of leaf

Waterweed- NATIVE

Elodea canadensis



Leaves in 3s whorled around stem with broader leaves, no teeth on margins of leaf

... vs Mare's Tail!



Sign up for our virtual newsletter!

- Upcoming events
- Volunteer opportunities
- Workshops & classes

Thank you!

Amanda Schmitz

aschmitz@waukeshacounty.gov

(262) 483-9687 - call or text

